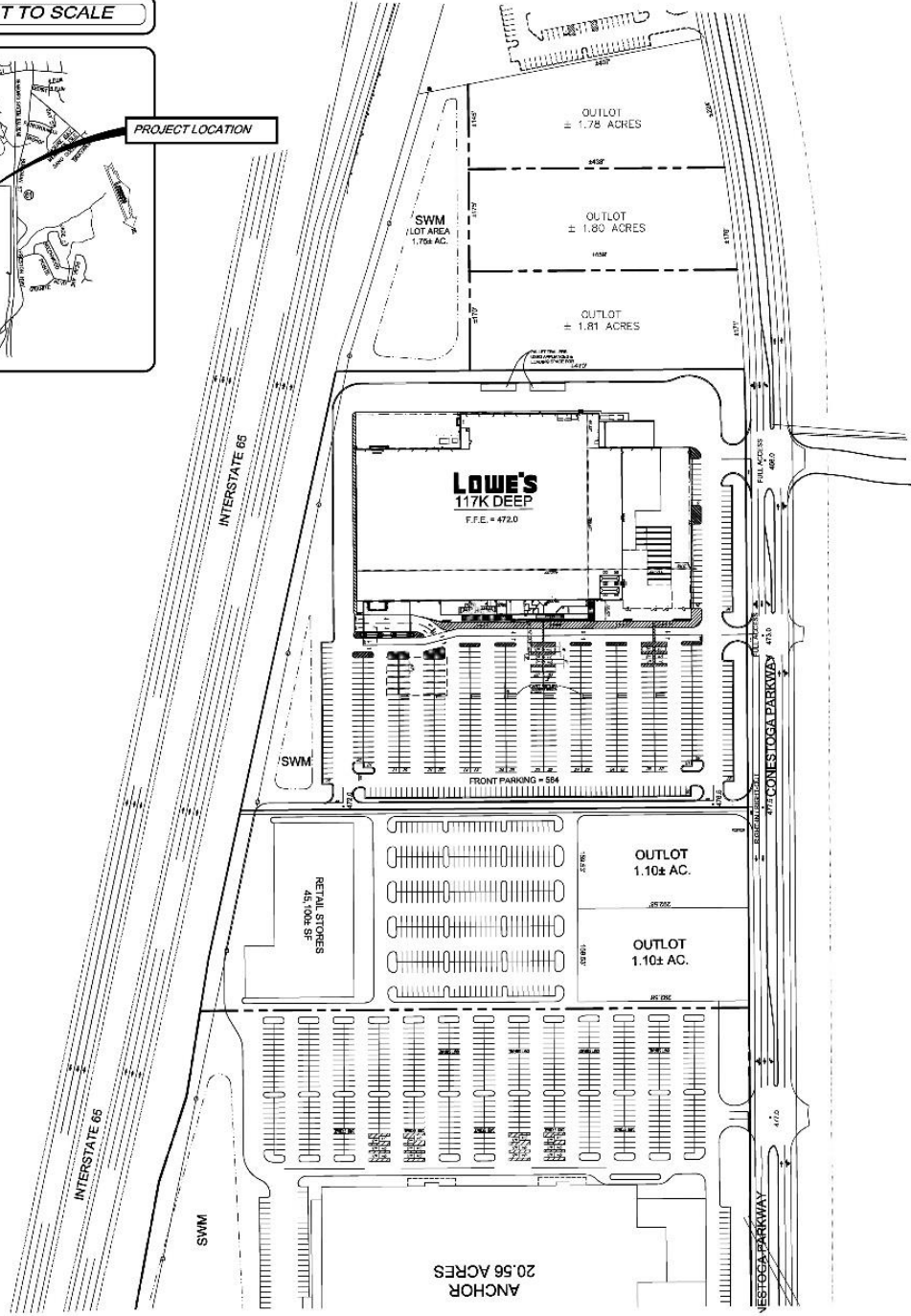
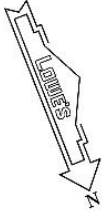
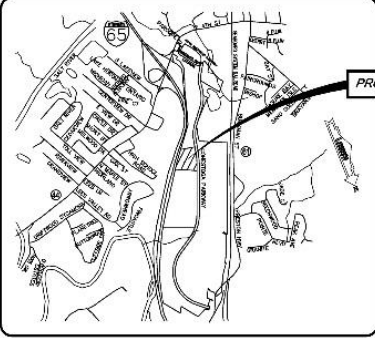
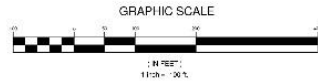


VICINITY MAP - NOT TO SCALE



SITE DEVELOPMENT NOTES

ZONING: B-2 CENTRAL BUSINESS
 ACCESS: TWO FULL ACCESS ONTO CONESTOGA PARKWAY AND ONE RIGHT-IN/RIGHT-OUT ONTO CONESTOGA PARKWAY
 STORMWATER: STORMWATER MANAGEMENT WILL BE HANDLED BY 1 POND
 WETLANDS: NONE ON SITE
 BUILDING MODIFICATIONS: NONE BY CITY
 DEVELOPMENT AGREEMENTS: NONE
 SITE DEVELOPMENT CONCERNS: NONE



PROJECT TEAM

GARY WYATT
 SR. VP REAL ESTATE, ENG. & CONST.
 MATTHEW MINTON
 SR. SITE DEVELOPMENT MANAGER
 BRETT JARRETT
 DIRECTOR REAL ESTATE



LANDSCAPE ASSOCIATES, INC.
 LAND PLANNING ASSOCIATES, INC.
 P.O. BOX 1000
 4275 SHERWOOD DR.
 SUITE 200
 FARMINGTON, CT 06030



SITE DEVELOPMENT, LLC
 P.O. BOX 1000
 4275 SHERWOOD DR.
 SUITE 200
 FARMINGTON, CT 06030

LOWE'S HOME CENTERS, INC.
 HWY. 285 EAST, EAST DOCK
 N. WILKESBORO, NC 28650
 703.528.2200 | 703.528.2257 | 703.528.2258



PRELIMINARY
 SITE PLAN
 LOWE'S OF
 SHEPHERDSVILLE, KENTUCKY
 DRAWN BY: CSJ
 CHECKED BY: STP/HRK

DRAWING NUMBER:
REC
 (Overlaid)
 Revised 7/11/07